



ORIGEN
RESOURCES

**DISCOVERY
DRIVEN VALUE
CREATION**



FORWARD LOOKING STATEMENT



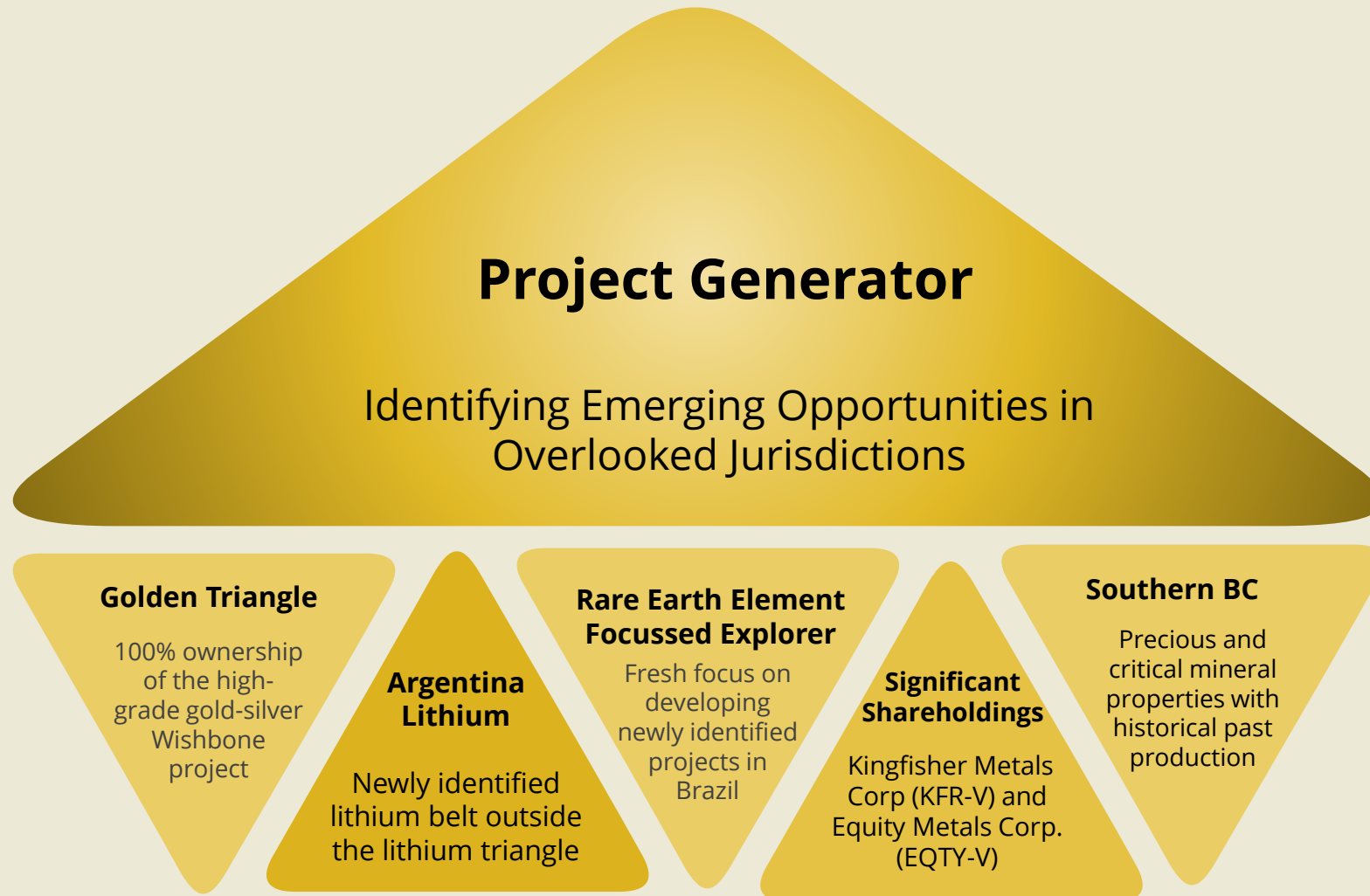
Investors are cautioned that, except for statements of historical fact certain information contained in this document includes “forward-looking information”, with respect to performance expectation for Origen. Such forward-looking statements or information, including but not limited to those with respect to its exploration projects, including the acquisition, prices, metallurgical results and resource estimates, involve known and unknown risks, uncertainties, and other factors which may cause the actual results, performance or achievements of the Company to be materially different from any future results, performance or achievements expressed or implied by such forward-looking statements or information.

Forward-looking statements include without limitation, statements regarding the company’s plans, goal or objectives and future exploration results, development programs, capital and operating costs, potential mineralization, resources and reserves, and future plans of Origen Resources Inc.. Forward looking statements can generally be identified by the use of forward-looking terminology such as “may”, “will”, “expect”, “intend”, “estimate”, “anticipate”, “believe”, or “continue” or the negative thereof or variations thereon or similar terminology. There can be no assurance that such statements will prove to be accurate and actual results and future events could differ materially from those anticipated in such statements. Important factors that could cause results to differ materially from expectations include risks associated with mineral exploration generally and pre-development stage projects in particular.

Regulatory bodies have not reviewed and do not accept responsibility for the adequacy or accuracy of this presentation. Readers should verify any & all claims and do their due diligence before investing in any securities mentioned. Investing in securities is speculative and carries a high degree of risk.

This presentation contains statistical and technical data that were obtained from government or other industry publications or publicly filed documents prepared by other reporting issuers. Such reports generally indicate that they have obtained their information from sources believed to be reliable, but do not guarantee the accuracy and completeness of their information. While Origen believes the data extracted, or derived from the aforementioned sources to be reliable, market and industry data is subject to variations and cannot be verified due to limits on the availability and reliability of underlying data inputs, the nature of the data collection process and certain limitations and uncertainties inherent in any market as well as the inexact nature of geologic sciences.

The technical information in this presentation has been reviewed and approved by John Harrop, P.Geo., a Qualified Person as defined by National Instrument 43-101 on April 27, 2026. Mineralization on adjacent Properties may not be indicative of Origen Resources’ Properties



MANAGEMENT

Gary Schellenberg, B.Sc.
CEO, Chairman and Director

40+ years experience in mineral exploration and venture markets. Founder of Coast Mountain Geological and former Director of Kodiak Copper; founding Director of Winspear Resources (Snap Lake discovery, later operated by De Beers) and has held numerous other board positions with junior explorers.

António Silva, Ph.D., MIMMM
Director

Dr. Silva is a geoscientist with expertise in critical raw materials, spanning mining geology, geochemistry, mineral processing, and extractive metallurgy. He has worked on hard-rock lithium, gold, and industrial mineral projects and brings valuable technical and regional experience across South America and Europe to Origen's board.

Geoff Schellenberg, B.Comm.
Director

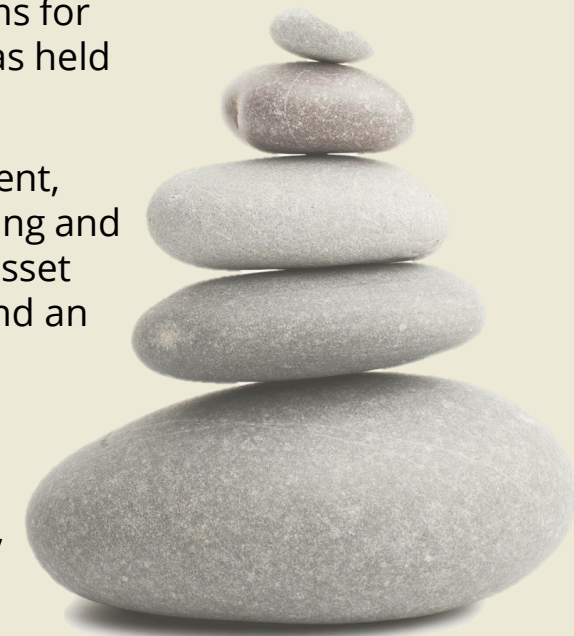
+20 yrs experience in mineral exploration and project management. Currently President of Coast Mountain Geological, overseeing exploration programs for clients ranging from junior explorers to major mining companies, and has held other board positions with junior explorers.

Paul Chung, B.Sc.
Director

Accomplished executive with extensive experience in project management, international negotiations, and public markets. Co-founder of Luca Mining and former Director of Patriot Battery Metals, with a strong background in asset acquisition and strategic planning. Holds a B.Sc. in Geology from UBC and an MBA in IT from Athabasca University.

Lawrence Cheung, CPA
CFO

CFO of Origen and Controller at Malaspina Consultants, providing financial reporting and regulatory services to public and private companies. Former Senior Associate at PwC with expertise in IFRS, ASPE, and US GAAP. Holds a B.Com. in Accounting from UBC Sauder and is a CPA in British Columbia.



SHARE STRUCTURE



As of April 27, 2026

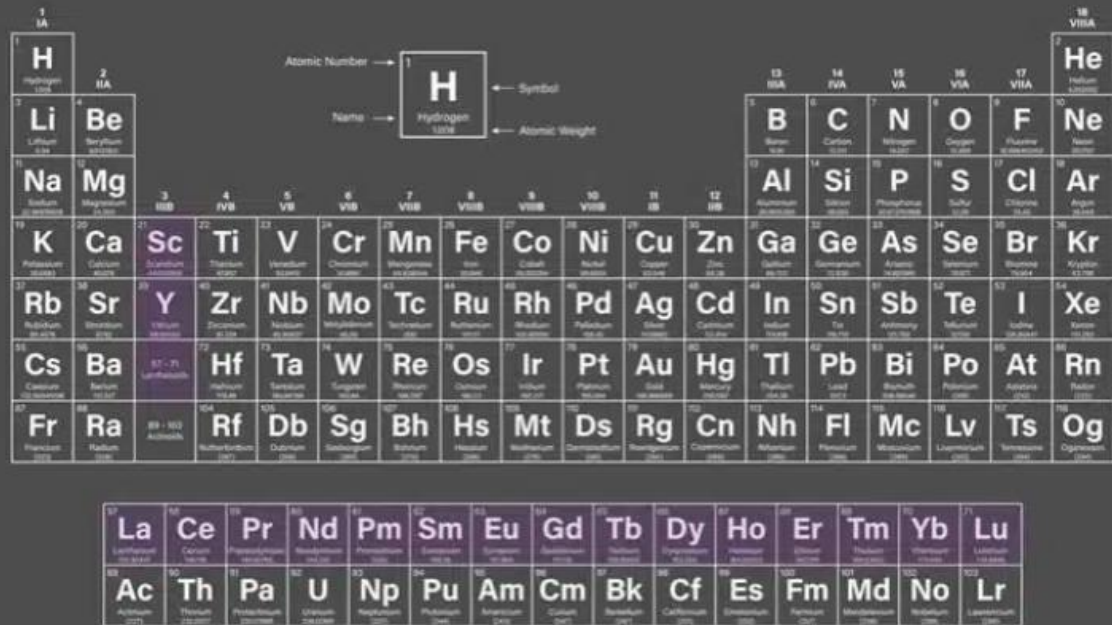
Shares Outstanding:	69,930,154
Outstanding Options:	3,825,000
Outstanding Warrants:	11,888,750
Fully Diluted	85,643,904

The Focus on Rare Earth Elements

What Are REEs and Why Are They Important?

- Rare Earth Elements (REEs) are a group of 17 metals known for their unique magnetic, optical, and other special properties.
- These elements are essential to modern technologies, from electric vehicles and wind turbines to smartphones and advanced defense systems.
- China currently controls the majority of global reserves and processing.
- Renewed focus by western countries to reduce dependence on supply from China is driving new exploration.

Periodic Table of the Elements



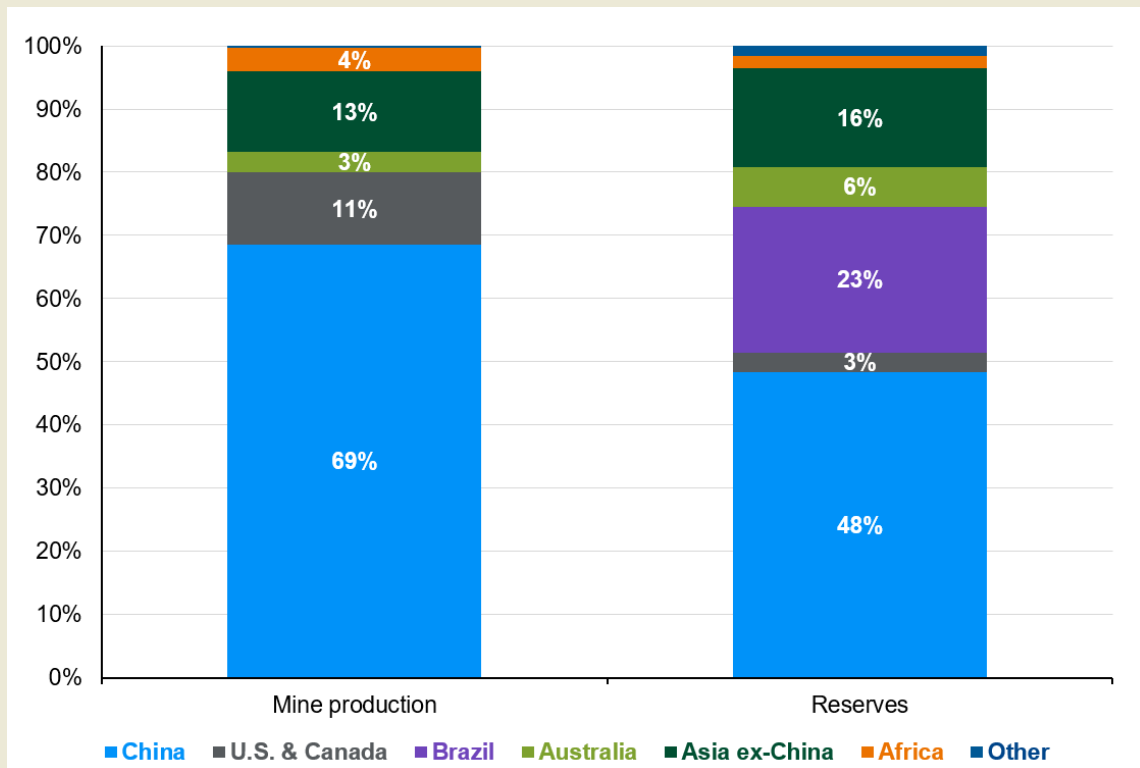
1 IA H Hydrogen 1.008	2 IIA He Helium 4.003																	18 VIIIA He Helium 4.003																													
3 IIIA Li Lithium 6.941	4 IIA Be Beryllium 9.012											13 IIIA B Boron 10.811	14 IVA C Carbon 12.011	15 VA N Nitrogen 14.007	16 VIA O Oxygen 15.999	17 VIIA F Fluorine 18.998	18 VIIIA Ne Neon 20.180																														
11 IA Na Sodium 22.990	12 IIA Mg Magnesium 24.305											31 IIIA Al Aluminum 26.982	32 IVA Si Silicon 28.086	33 VA P Phosphorus 30.974	34 VIA S Sulfur 32.065	35 VIIA Cl Chlorine 35.453	36 VIIIA Ar Argon 39.948																														
19 IA K Potassium 39.098	20 IIA Ca Calcium 40.078	21 Sc Scandium 44.956	22 Ti Titanium 47.88	23 V Vanadium 50.942	24 Cr Chromium 52.004	25 Mn Manganese 54.938	26 Fe Iron 55.845	27 Co Cobalt 58.933	28 Ni Nickel 58.693	29 Cu Copper 63.546	30 Zn Zinc 65.38	31 Ga Gallium 69.723	32 Ge Germanium 72.64	33 As Arsenic 74.922	34 Se Selenium 78.96	35 Br Bromine 79.904	36 Kr Krypton 83.8																														
37 IA Rb Rubidium 85.468	38 IIA Sr Strontium 87.62	39 Y Yttrium 88.906	40 Zr Zirconium 91.224	41 Nb Niobium 92.906	42 Mo Molybdenum 95.94	43 Tc Technetium 98.906	44 Ru Ruthenium 101.07	45 Rh Rhodium 102.91	46 Pd Palladium 106.36	47 Ag Silver 107.868	48 Cd Cadmium 112.415	49 In Indium 114.818	50 Sn Tin 118.710	51 Sb Antimony 121.757	52 Te Tellurium 127.6	53 I Iodine 126.905	54 Xe Xenon 131.29																														
55 IA Cs Cesium 132.905	56 IIA Ba Barium 137.327	57-71 Lanthanides	72 Hf Hafnium 178.49	73 Ta Tantalum 180.948	74 W Tungsten 183.84	75 Re Rhenium 186.207	76 Os Osmium 190.23	77 Ir Iridium 192.222	78 Pt Platinum 195.084	79 Au Gold 196.967	80 Hg Mercury 200.59	81 Tl Thallium 204.383	82 Pb Lead 207.2	83 Bi Bismuth 208.98	84 Po Polonium 209	85 At Astatine 210	86 Rn Radon 222																														
87 IA Fr Francium 223	88 IIA Ra Radium 226	89-103 Actinides	104 Rf Rutherfordium 261	105 Db Dubnium 262	106 Sg Seaborgium 263	107 Bh Bohrium 264	108 Hs Hassium 265	109 Mt Meitnerium 266	110 Ds Darmstadtium 267	111 Rg Roentgenium 268	112 Cn Copernicium 269	113 Nh Nihonium 270	114 Fl Flerovium 271	115 Mc Moscovium 272	116 Lv Livermorium 273	117 Ts Tennessine 274	118 Og Oganesson 277																														
<table border="1"> <tr> <td>57 La Lanthanum 138.905</td> <td>58 Ce Cerium 140.12</td> <td>59 Pr Praseodymium 140.908</td> <td>60 Nd Neodymium 144.24</td> <td>61 Pm Promethium 144.913</td> <td>62 Sm Samarium 150.36</td> <td>63 Eu Europium 151.964</td> <td>64 Gd Gadolinium 157.25</td> <td>65 Tb Terbium 158.925</td> <td>66 Dy Dysprosium 162.50</td> <td>67 Ho Holmium 164.930</td> <td>68 Er Erbium 167.259</td> <td>69 Tm Thulium 168.934</td> <td>70 Yb Ytterbium 173.054</td> <td>71 Lu Lutetium 174.967</td> </tr> <tr> <td>89 Ac Actinium 227</td> <td>90 Th Thorium 232.038</td> <td>91 Pa Protactinium 231.036</td> <td>92 U Uranium 238.029</td> <td>93 Np Neptunium 237.048</td> <td>94 Pu Plutonium 244.064</td> <td>95 Am Americium 243.061</td> <td>96 Cm Curium 247.070</td> <td>97 Bk Berkelium 247.070</td> <td>98 Cf Californium 251.080</td> <td>99 Es Einsteinium 252.083</td> <td>100 Fm Fermium 257.103</td> <td>101 Md Mendelevium 258.106</td> <td>102 No Nobelium 259.108</td> <td>103 Lr Lawrencium 260.105</td> </tr> </table>																		57 La Lanthanum 138.905	58 Ce Cerium 140.12	59 Pr Praseodymium 140.908	60 Nd Neodymium 144.24	61 Pm Promethium 144.913	62 Sm Samarium 150.36	63 Eu Europium 151.964	64 Gd Gadolinium 157.25	65 Tb Terbium 158.925	66 Dy Dysprosium 162.50	67 Ho Holmium 164.930	68 Er Erbium 167.259	69 Tm Thulium 168.934	70 Yb Ytterbium 173.054	71 Lu Lutetium 174.967	89 Ac Actinium 227	90 Th Thorium 232.038	91 Pa Protactinium 231.036	92 U Uranium 238.029	93 Np Neptunium 237.048	94 Pu Plutonium 244.064	95 Am Americium 243.061	96 Cm Curium 247.070	97 Bk Berkelium 247.070	98 Cf Californium 251.080	99 Es Einsteinium 252.083	100 Fm Fermium 257.103	101 Md Mendelevium 258.106	102 No Nobelium 259.108	103 Lr Lawrencium 260.105
57 La Lanthanum 138.905	58 Ce Cerium 140.12	59 Pr Praseodymium 140.908	60 Nd Neodymium 144.24	61 Pm Promethium 144.913	62 Sm Samarium 150.36	63 Eu Europium 151.964	64 Gd Gadolinium 157.25	65 Tb Terbium 158.925	66 Dy Dysprosium 162.50	67 Ho Holmium 164.930	68 Er Erbium 167.259	69 Tm Thulium 168.934	70 Yb Ytterbium 173.054	71 Lu Lutetium 174.967																																	
89 Ac Actinium 227	90 Th Thorium 232.038	91 Pa Protactinium 231.036	92 U Uranium 238.029	93 Np Neptunium 237.048	94 Pu Plutonium 244.064	95 Am Americium 243.061	96 Cm Curium 247.070	97 Bk Berkelium 247.070	98 Cf Californium 251.080	99 Es Einsteinium 252.083	100 Fm Fermium 257.103	101 Md Mendelevium 258.106	102 No Nobelium 259.108	103 Lr Lawrencium 260.105																																	

Image from: <https://rareearthexchanges.com/learn/rare-earths/>

The Focus on Rare Earth Elements

Current Supply Metrics and the Focus on Brazil

% of Total Production and Reserves, 2024



- China controls majority of REE production and reserves, but other reserves are found worldwide.
- Brazil has the second largest known REE reserves in the world yet remains heavily under explored.
- Brazil has the 9th largest global economy with mining driving 23% of exports.
- Brazil has an excellent regulatory framework and strong government support for critical mineral projects.

Source: U.S. Geological Survey Mineral Commodity Summaries 2025, J.P. Morgan Asset Management. Figures are estimates due to a lack of data availability in some countries. Mine production for China is based on production quotas and does not include undocumented production. <https://am.jpmorgan.com/us/en/asset-management/adv/insights/market-insights/market-updates/on-the-minds-of-investors/why-are-rare-earth-metals-important/>

Brazil Rare Earth Projects – The Opportunity



Located in Bahia and Piauí States, Northeastern Brazil

- Emerging REE districts with limited prior exploration and growing regional significance.
- First-mover position; agreements executed to control over 68,000 ha across 8 project areas.
- Piauí vendor sampling returned 1.61% TREO (ex-Y), including 20.5% HREEs, with additional float samples returning 0.19–0.32% TREO.
- New 33,075 ha Bahia–Piauí acquisition includes a 4 km x 6 km anomalous REE target identified through shallow soil sampling.
- Primary exploration model includes ion adsorption clay-hosted REE mineralization.

Brazil Rare Earth Project



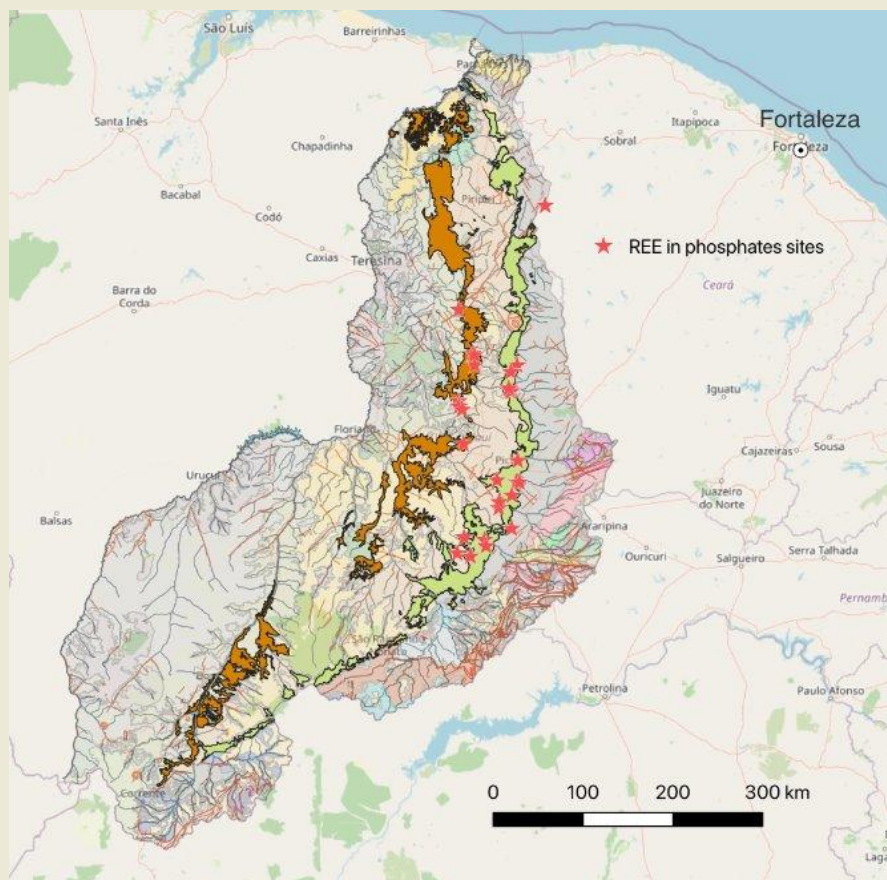
Phosphate Rich Beds Investigated During Field Program

Due Diligence Field Program Completed Late 2025

- Confirmed phosphate beds with elevated REEs
- Confirmed the presence of distinctive phosphate nodules and bedding
- Applied gamma spectrometer and XRF methods to identify prospective sites
- Identified successful exploration strategies to utilize in upcoming field work

Brazil Rare Earth Projects

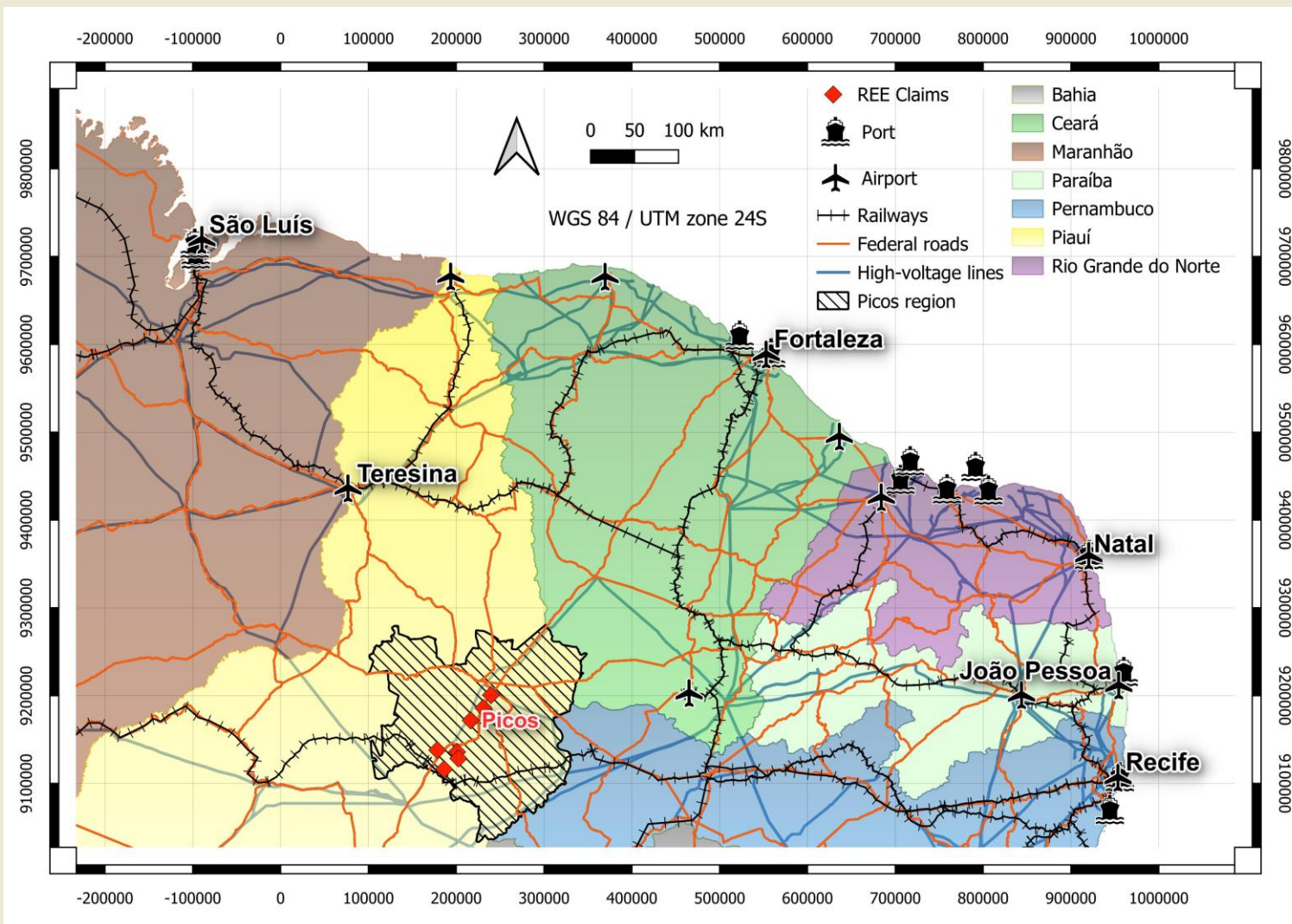
The Significant Relationship Between Phosphates and REEs



REE Showings in Phosphates in Piauí as Mapped by SGB (Brazil Geological Survey)

- Phosphates deposited during the Devonian Period are uniquely anomalous in REEs
- Initial results from Picos show a much higher proportion of HREE than Mountain Pass, the only REE producer in the United States
- HREEs are essential for their importance in clean energy and national security technologies
- Devonian Phosphates like those present on the Picos REE project are also a potential source rock for Ionic Adsorption Clay Deposits
- Emerging important REE source due to potentially simpler extraction, lower cost and higher HREE percentage

Strategic REE Claim Position Near Established Infrastructure



- Origen's REE claims are located near Picos, Piauí, within an accessible regional infrastructure corridor
- The project area benefits from proximity to federal roads, railways, airports, and high-voltage transmission lines
- Nearby infrastructure may support future exploration access, logistics, power availability, and potential project development planning

Brazil Rare Earth Projects

Next Steps



- Geological evaluation underway on two distinct models:
 - Phosphate hosted HREE enriched targets
 - Ion Adsorption Clay Deposit (IACD) potential — also a globally important source of heavy REE
- Origen will continue to add to its portfolio of properties as further targets are identified
- Regional airborne radiometrics to commence shortly
- Follow-up mapping and sampling planned for a vendor-identified anomalous REE area measuring approximately 4 km x 6 km and centered on a high value of 282 ppm TREO+Y

Peer Comparatives: Brazil-Focused Rare Earth Valuations

Selected Brazil-Focused REE Peers by Market Capitalization



Brazil REE Peer Valuations Highlight Origen's Early-Stage Leverage

- Brazilian Rare Earths provides a relevant Brazil-focused benchmark at approximately C\$1.4B.
- Selected Brazil-focused REE peers with 18,000–54,000 ha land packages are valued from approximately C\$31M to C\$544M.
- Origen controls 68,000+ ha in Piaui, giving it one of the larger land positions among selected Brazil-focused peers.
- At approximately C\$6M, Origen offers early-stage valuation exposure to a district-scale REE opportunity in northeastern Brazil.

OTHER PROJECTS

Available for Option

Golden Triangle

Wishbone Drill permitted, 3,941 ha project adjacent to Galore Creek. 9km trend along series of gold and silver rich targets. Samples of 8.5 ppm gold in soil and ¹grab samples of up 202.6 ppm in rock.

Southern BC

Broken Handle: 2,098 ha historical mine - high-grade precious and base metals located 50 km north of Grand Forks.

Bonanza Mountain: 100% interest in 1,604 ha historically mined high-grade precious and base metal project located 20 km north of Grand Forks.

Argentina Lithium

Los Sapitos, Argentina The 27,000 ha project is a new brine and clay lithium exploration target within a prospective tectonic corridor in northern San Juan province.



¹Grab samples are by definition selective. Grab samples are solely designed to show the presence or absence of mineralization, and are not intended to provide nor should be construed as a representative indication of grade or mineralization at the Project.

² Referenced nearby historic resources, deposits and mines provide geologic context for the Project, but are not necessarily indicative that the Project hosts similar potential, size or grades of mineralization.

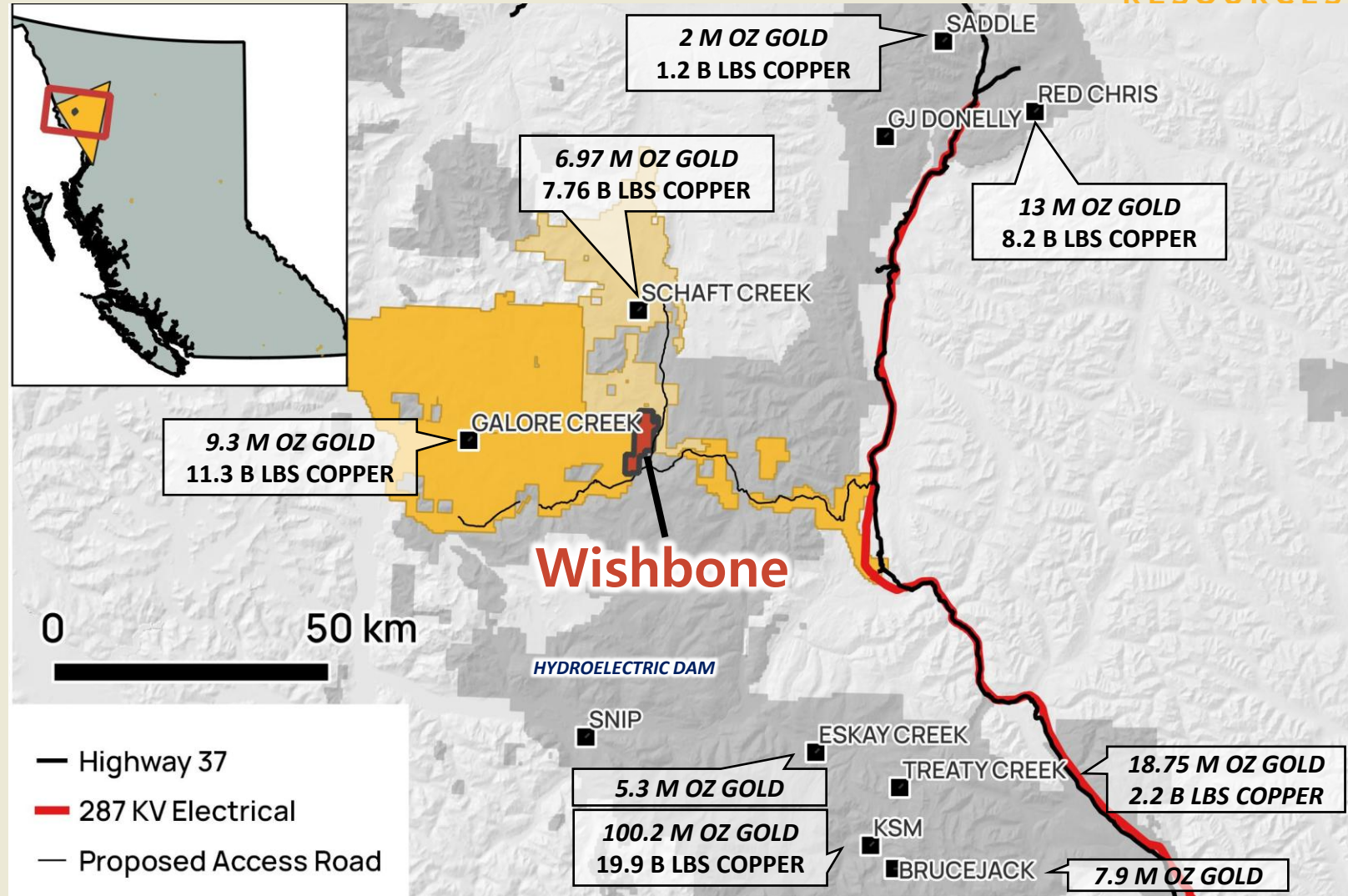
GOLDEN TRIANGLE WISHBONE

British Columbia Targets Redefined

Major Resources (Measured and Indicated) Within 75km of the LGM and Wishbone Claims

Deposit	Copper (Blb)	Gold (Moz)	Ag (Moz)
KSM	19.9	100.2	426.9
TREATY CREEK	2.18	18.75	112.4
RED CHRIS	8.2	13	
GALORE CREEK	11.3	9.259	149.8
SCHAFT CREEK	7.76	6.97	54.26
BRUCE JACK		7.9	21
ESKAY CREEK		3.9	101
SADDLE	1.8	3.47	7.6
TOTAL	51	163	873

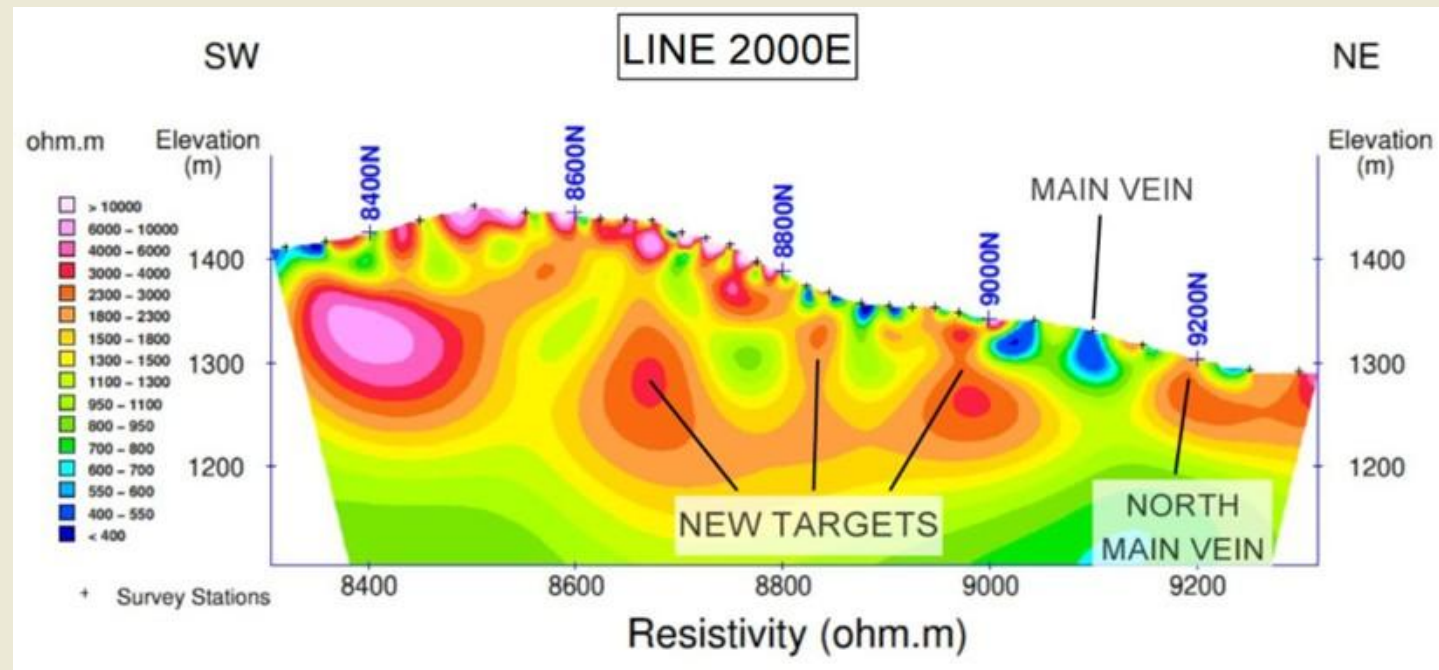
References: KSM : Seabridge (M+I) – 2022. TREATY CREEK -Tudor Gold (M+I) Website. RED CHRIS Imperial Metals (M+I) 2021. GALORE CREEK: Galore Creek (M+I) -2014. SCHAFT CREEK - Copper Fox – Reserves Website. ESKAY CREEK: Skeena Resources (M+I) -2021 -website. SADDLE: GT Gold (Indicated) - 2020. BRUCE JACK: Newcrest Annual Mineral Resources statement, 2023



WISHBONE PROJECT

British Columbia Targets Redefined

- Drill permitted 3,971 ha. Property adjacent to Galore Creek, jointly owned by Teck and Newmont
- 11 target areas over a 9 km trend.
- Numerous soil samples greater than 1000 ppb (or 1 g/t) gold.
- Historical grab samples as high as 6.7 kg/t silver and 202 g/t gold
- Airborne geophysics highlighted underlying structures on the property.
- Rapidly receding glacial ice has exposed new high grade gold showings.
- Both the proposed Galore and Schaft Creek access roads cross the property.
- IP has outlined multiple high priority drill targets



2025 IP Survey Results Outlining High Priority Targets

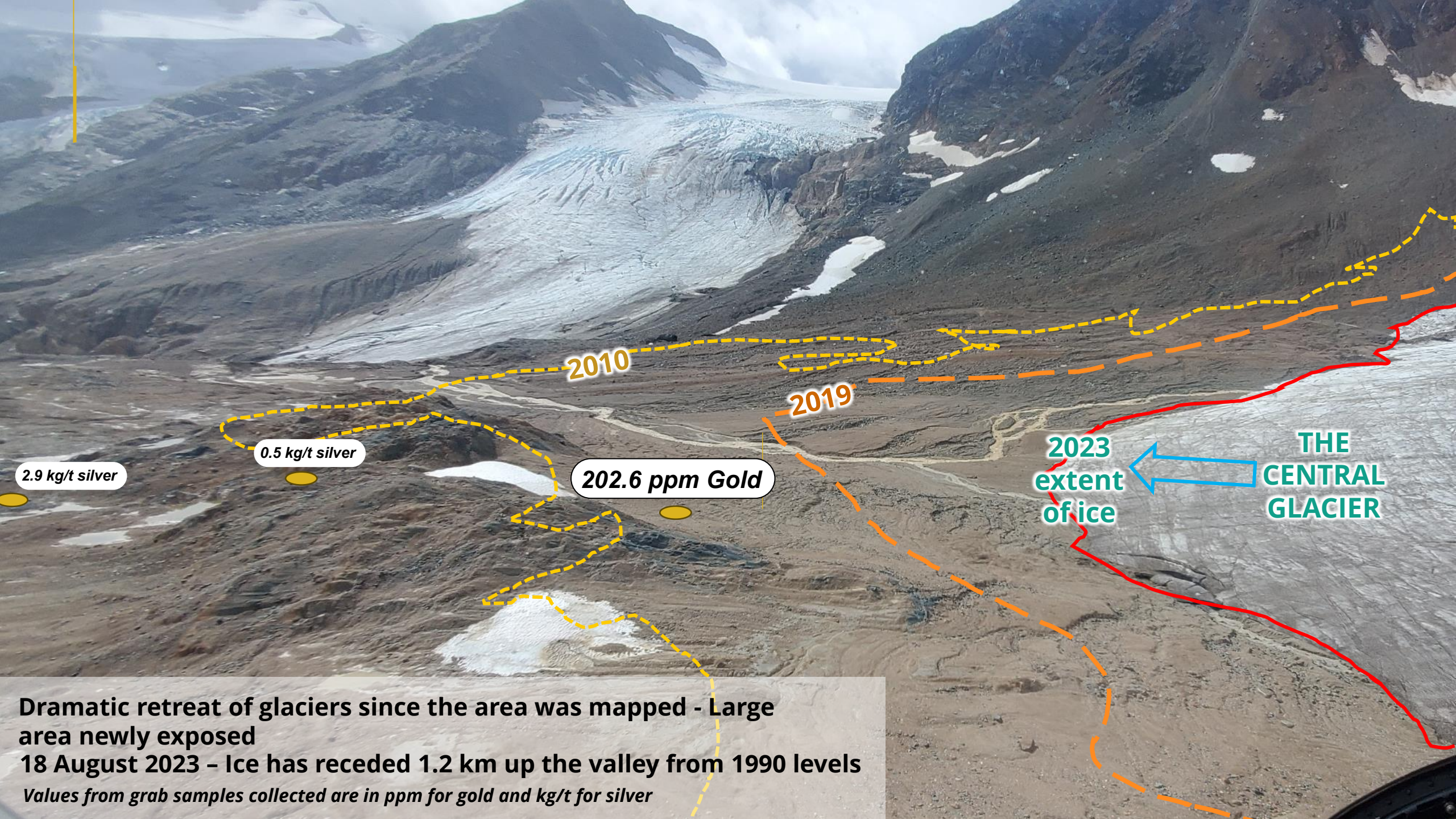
WISHBONE PROJECT

British Columbia Targets Redefined



ORIGEN
RESOURCES





2.9 kg/t silver

0.5 kg/t silver

202.6 ppm Gold

2010

2019

2023
extent
of ice

THE
CENTRAL
GLACIER

Dramatic retreat of glaciers since the area was mapped - Large area newly exposed
18 August 2023 - Ice has receded 1.2 km up the valley from 1990 levels
Values from grab samples collected are in ppm for gold and kg/t for silver

LOS SAPITOS PROJECT

San Juan Argentina – Lithium Brine



Origen previously recognized that the geology of the mining-friendly northern San Juan Province was similar to that of within the established lithium belts in the north of the country.

Guided by this exploration model Origen was able to acquire a district-sized contiguous land package around a mostly-buried Los Sapitos salar in San Juan.

Since the acquisition Tres Quebradas was sold for \$920M CAD far south of the current Lithium Triangle.

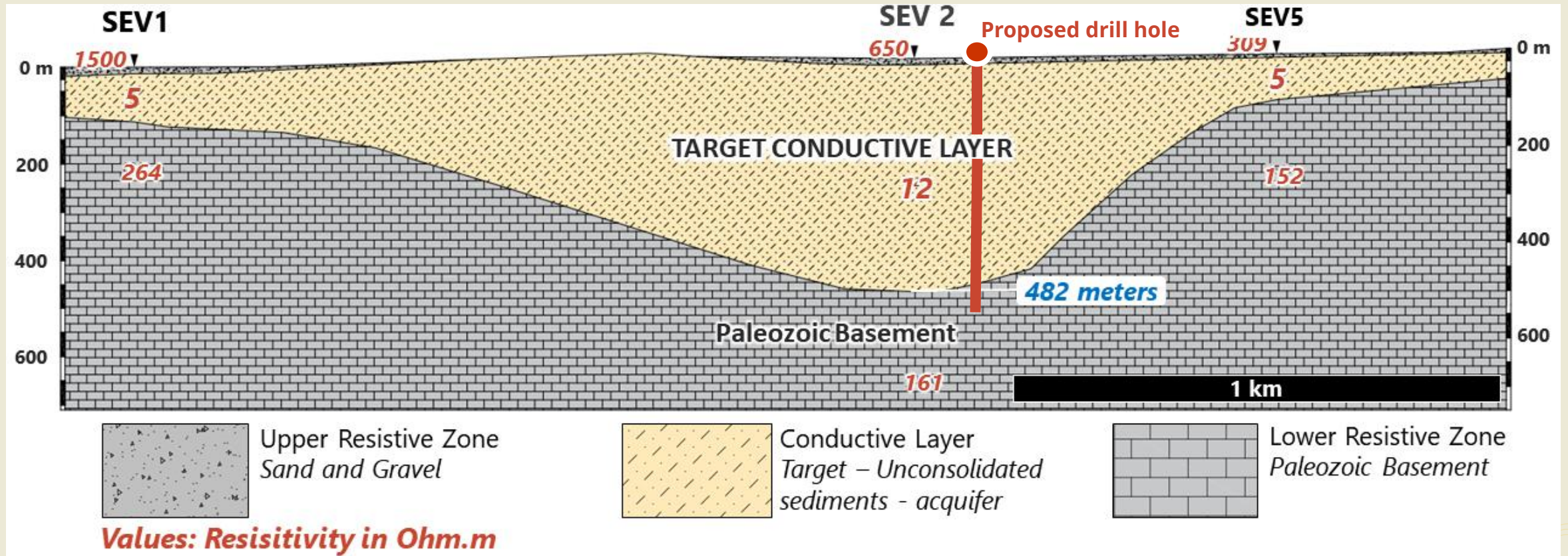


LOS SAPITOS PROJECT

San Juan Argentina – Lithium Brine

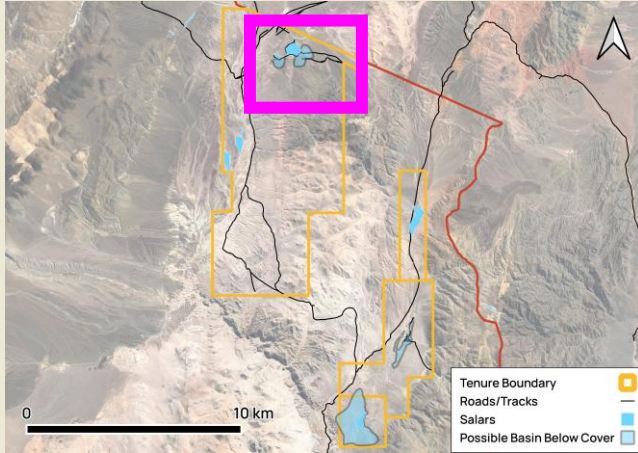
Result of 2023 geophysics showing the morphology of the basin
In July 2023 field teams carried out 3 vertical electrical sounding surveys at three locations in the area.

Los Sapitos Salar



LOS SAPITOS PROJECT

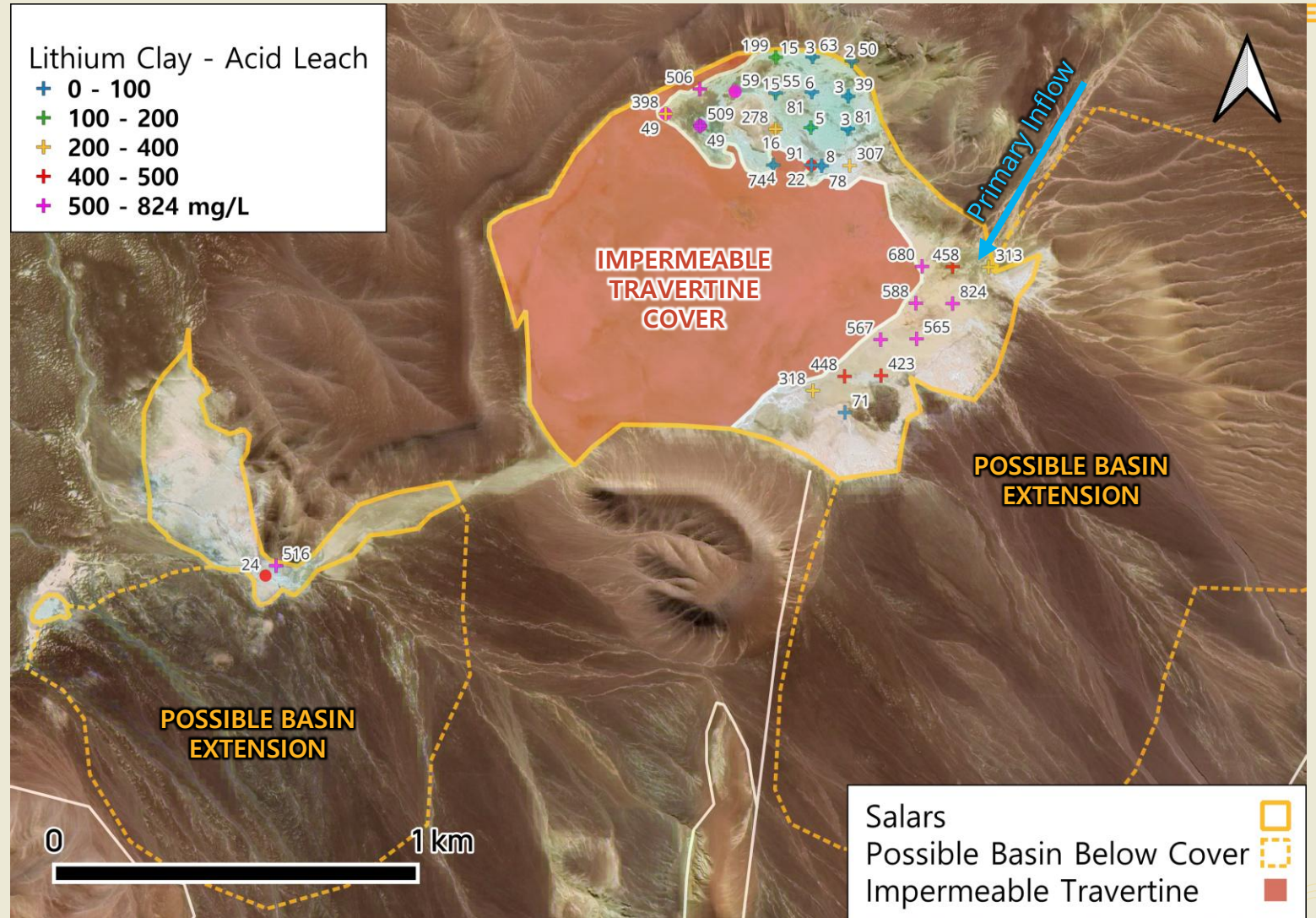
San Juan Argentina – Lithium Brine



2023 silt and brine samples collected from the Los Sapitos salar

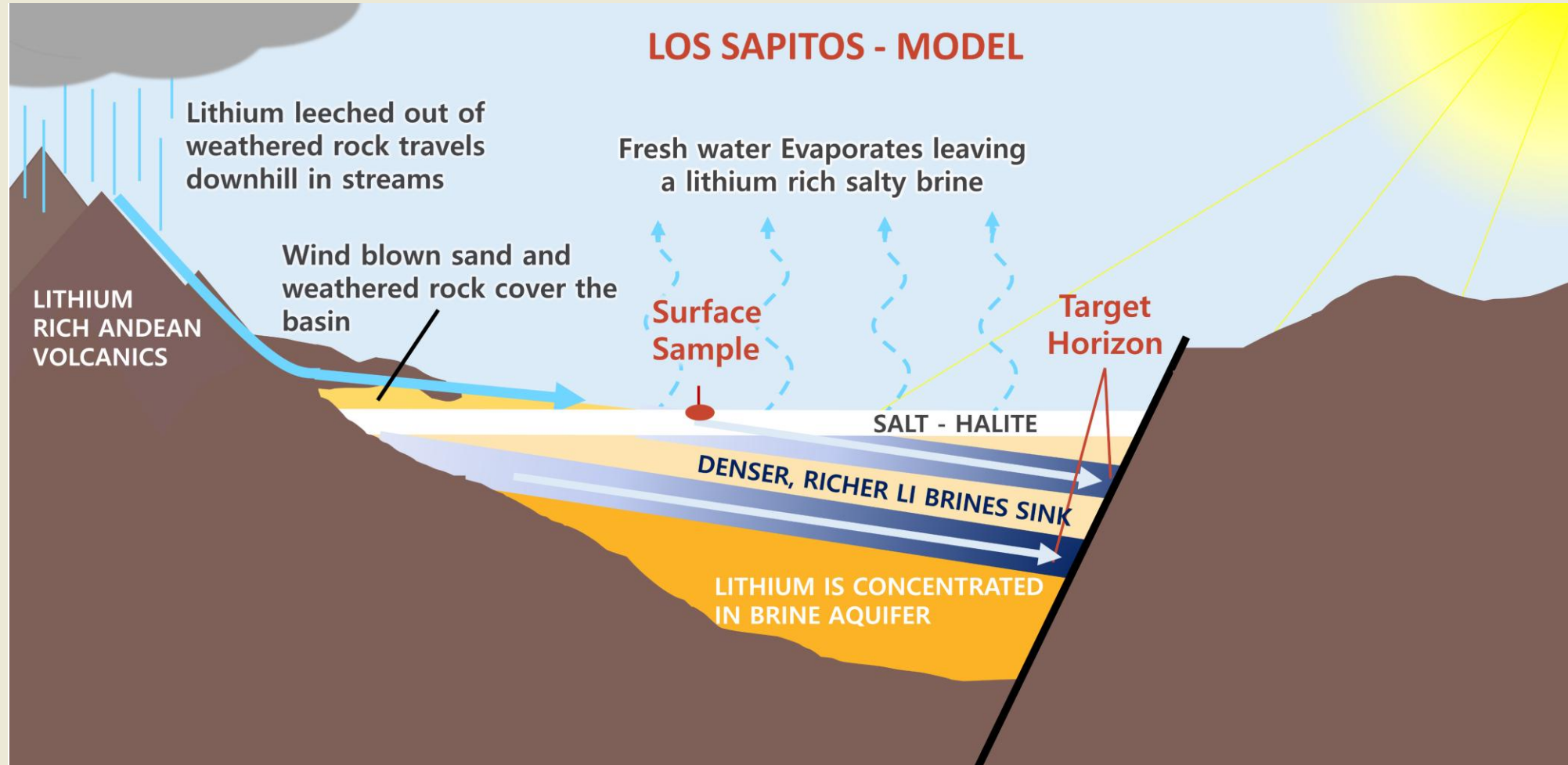
The results show that significant lithium is found both in clays and in evaporite mineralization along the eastern edge of the salar and in brine samples on the north-western part of the salar.

These areas will be targeted in upcoming drilling as well to test through the impermeable travertine



LOS SAPITOS PROJECT

San Juan Argentina – Lithium Brine



CONTACT

Gary Schellenberg – CEO, Director



604-681-0221



gary@origenresources.com

Caroline Klukowski – Investor Relations



604-763-8730



ck@origenresources.com



www.origenresources.com

CSE: ORGN

FSE: 4VXA



ORIGEN
RESOURCES