



**ORIGEN**  
RESOURCES

**DISCOVERY  
DRIVEN VALUE  
CREATION**



# FORWARD LOOKING STATEMENT



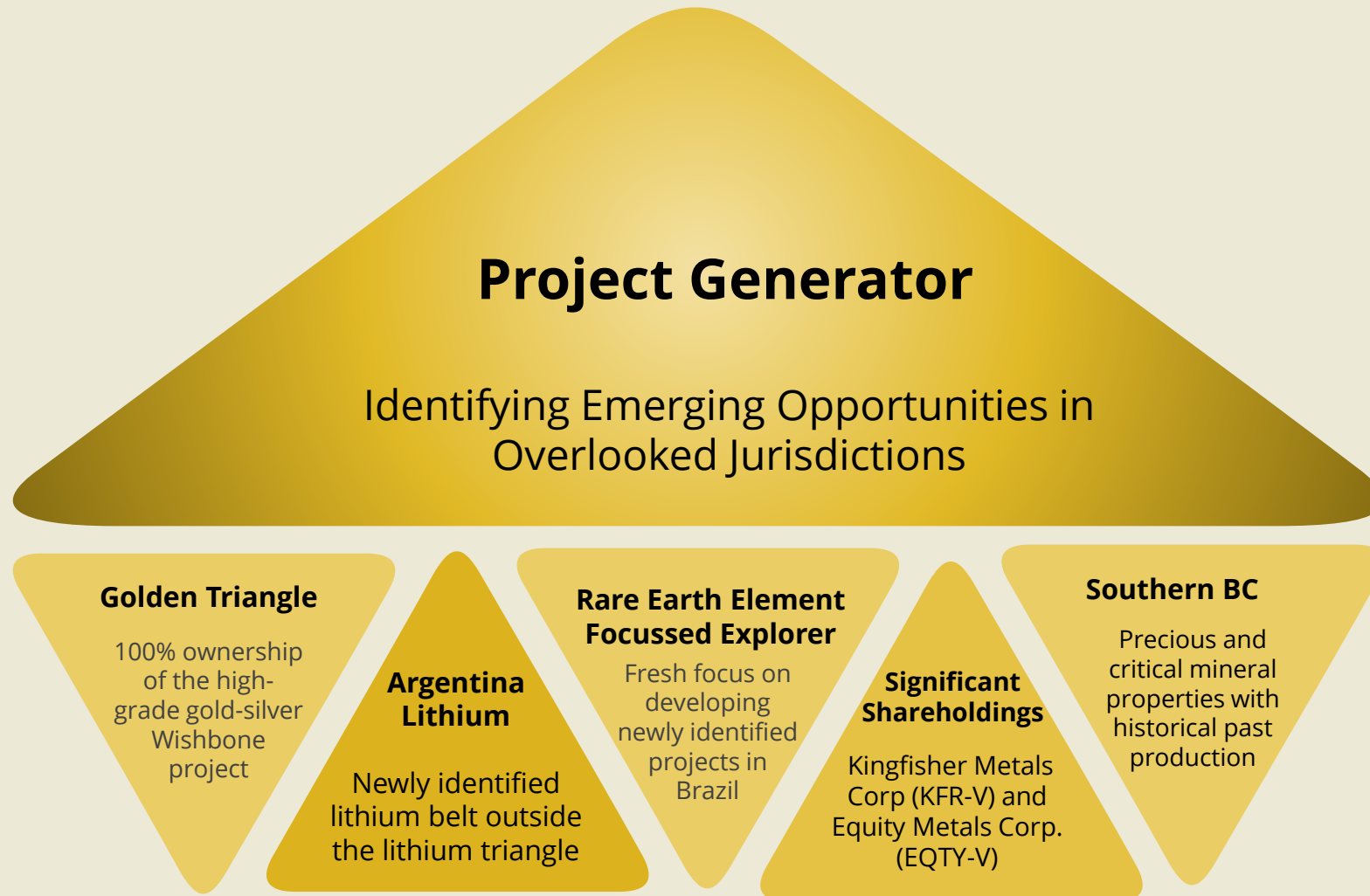
Investors are cautioned that, except for statements of historical fact certain information contained in this document includes “forward-looking information”, with respect to performance expectation for Origen. Such forward-looking statements or information, including but not limited to those with respect to its exploration projects, including the acquisition, prices, metallurgical results and resource estimates, involve known and unknown risks, uncertainties, and other factors which may cause the actual results, performance or achievements of the Company to be materially different from any future results, performance or achievements expressed or implied by such forward-looking statements or information.

Forward-looking statements include without limitation, statements regarding the company’s plans, goal or objectives and future exploration results, development programs, capital and operating costs, potential mineralization, resources and reserves, and future plans of Origen Resources Inc.. Forward looking statements can generally be identified by the use of forward-looking terminology such as “may”, “will”, “expect”, “intend”, “estimate”, “anticipate”, “believe”, or “continue” or the negative thereof or variations thereon or similar terminology. There can be no assurance that such statements will prove to be accurate and actual results and future events could differ materially from those anticipated in such statements. Important factors that could cause results to differ materially from expectations include risks associated with mineral exploration generally and pre-development stage projects in particular.

Regulatory bodies have not reviewed and do not accept responsibility for the adequacy or accuracy of this presentation. Readers should verify any & all claims and do their due diligence before investing in any securities mentioned. Investing in securities is speculative and carries a high degree of risk.

This presentation contains statistical and technical data that were obtained from government or other industry publications or publicly filed documents prepared by other reporting issuers. Such reports generally indicate that they have obtained their information from sources believed to be reliable, but do not guarantee the accuracy and completeness of their information. While Origen believes the data extracted, or derived from the aforementioned sources to be reliable, market and industry data is subject to variations and cannot be verified due to limits on the availability and reliability of underlying data inputs, the nature of the data collection process and certain limitations and uncertainties inherent in any market as well as the inexact nature of geologic sciences.

The technical information in this presentation has been reviewed and approved by Dr. Thomas Hawkins a Qualified Person as defined by National Instrument 43-101 on January 28, 2026. Mineralization on adjacent Properties may not be indicative of Origen Resources’ Properties



# MANAGEMENT

**Gary Schellenberg, B.Sc.**  
CEO, Chairman and Director

40+ years experience in mineral exploration and venture markets. Founder of Coast Mountain Geological and former Director of Kodiak Copper; founding Director of Winspear Resources (Snap Lake discovery, later operated by De Beers) and has held numerous other board positions with junior explorers.

**António Silva, Ph.D., MIMMM**  
Director

Dr. Silva is a geoscientist with expertise in critical raw materials, spanning mining geology, geochemistry, mineral processing, and extractive metallurgy. He has worked on hard-rock lithium, gold, and industrial mineral projects and brings valuable technical and regional experience across South America and Europe to Origen's board.

**Geoff Schellenberg, B.Comm.**  
Director

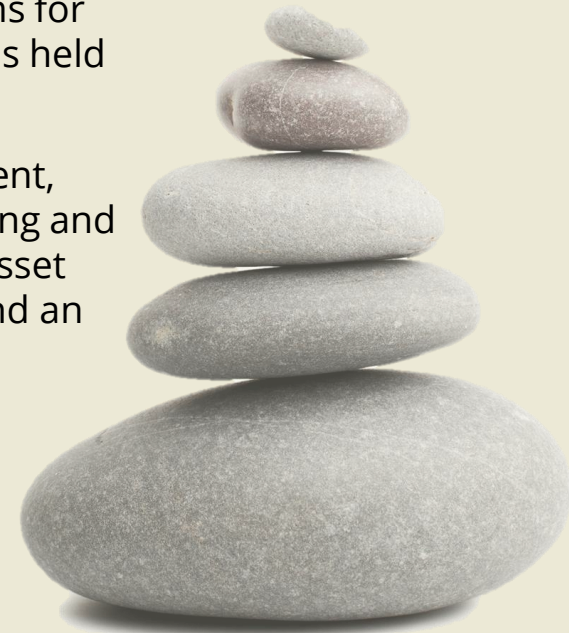
+20 yrs experience in mineral exploration and project management. Currently President of Coast Mountain Geological, overseeing exploration programs for clients ranging from junior explorers to major mining companies, and has held other board positions with junior explorers.

**Paul Chung, B.Sc.**  
Director

Accomplished executive with extensive experience in project management, international negotiations, and public markets. Co-founder of Luca Mining and former Director of Patriot Battery Metals, with a strong background in asset acquisition and strategic planning. Holds a B.Sc. in Geology from UBC and an MBA in IT from Athabasca University.

**Lawrence Cheung, CPA**  
CFO

CFO of Origen and Controller at Malaspina Consultants, providing financial reporting and regulatory services to public and private companies. Former Senior Associate at PwC with expertise in IFRS, ASPE, and US GAAP. Holds a B.Com. in Accounting from UBC Sauder and is a CPA in British Columbia.



# SHARE STRUCTURE



As of January 15, 2026

Shares Outstanding:	57,930,154
Outstanding Options:	3,825,00
Outstanding Warrants:	5,938,750 1,150,000 @ \$0.075 (March 26,2027) 4,788,750 @ \$0.075 (Feb 28, 2027)
Fully Diluted	67,693,904

Amended to reflect the:

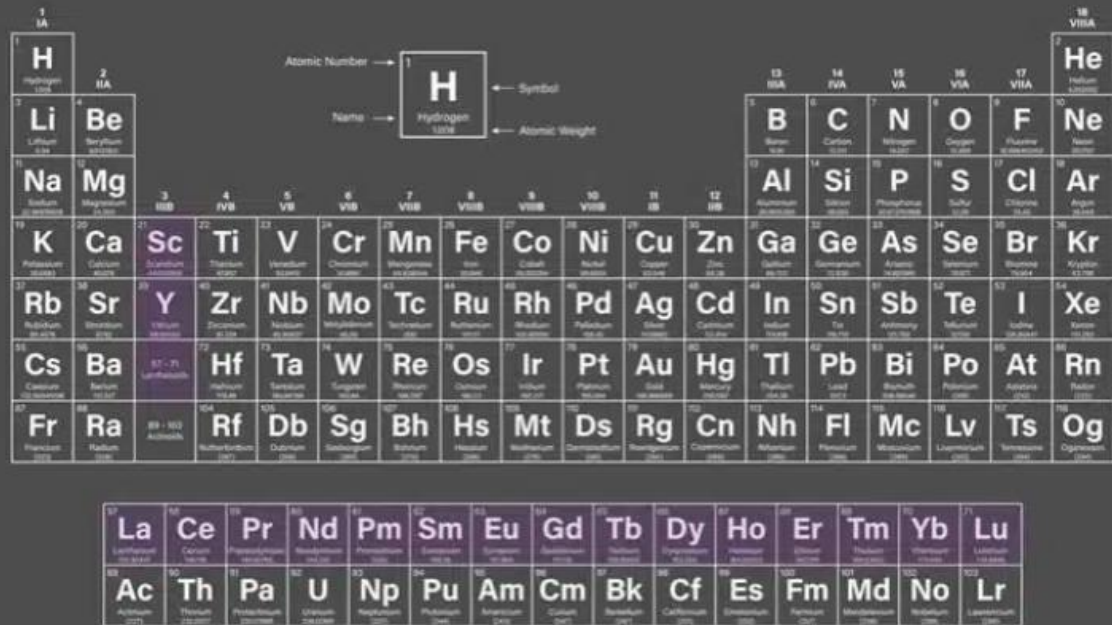
The expiration of 500,000 incentive stock options, originally granted/issued on January 21, 2021.

# The Focus on Rare Earth Elements

## What Are REEs and Why Are They Important?

- Rare Earth Elements (REEs) are a group of 17 metals known for their unique magnetic, optical, and other special properties.
- These elements are essential to modern technologies, from electric vehicles and wind turbines to smartphones and advanced defense systems.
- China currently controls the majority of global reserves and processing.
- Renewed focus by western countries to reduce dependence on supply from China is driving new exploration.

**Periodic Table of the Elements**



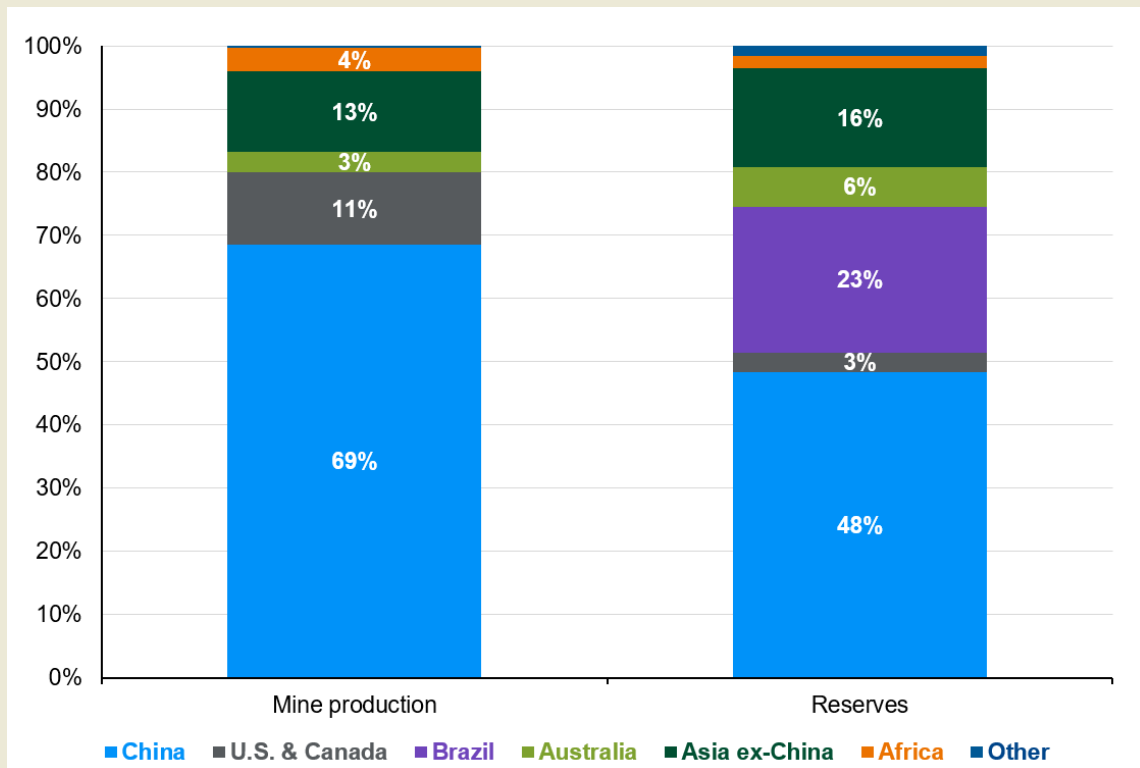
The image shows a standard periodic table of elements. The first element, Hydrogen (H), is highlighted with a larger box. Labels with arrows point to its Atomic Number (1), Name (Hydrogen), Symbol (H), and Atomic Weight (1.008). The table includes elements from Hydrogen (1) to Oganesson (118), with the Lanthanide and Actinide series shown below the main table.

Image from: <https://rareearthexchanges.com/learn/rare-earths/>

# The Focus on Rare Earth Elements

## Current Supply Metrics and the Focus on Brazil

### % of Total Production and Reserves, 2024



- China controls majority of REE production and reserves, but other reserves are found worldwide.
- Brazil has the second largest known REE reserves in the world yet remains heavily under explored.
- Brazil has the 9<sup>th</sup> largest global economy with mining driving 23% of exports.
- Brazil has an excellent regulatory framework and strong government support for critical mineral projects.

Source: U.S. Geological Survey Mineral Commodity Summaries 2025, J.P. Morgan Asset Management. Figures are estimates due to a lack of data availability in some countries. Mine production for China is based on production quotas and does not include undocumented production. <https://am.jpmorgan.com/us/en/asset-management/adv/insights/market-insights/market-updates/on-the-minds-of-investors/why-are-rare-earth-metals-important/>

# Brazil Rare Earth Projects – The Opportunity



## Located in Piauí State, Northeastern Brazil

- Emerging Rare Earth (REE) district with little prior exploration.
- First mover advantage; LOI signed to acquire a 3,978-hectares with a right of first refusal on an additional 9,902 hectares of land.
- Vendor sampling returned 1.61% TREO (ex-Y), 20.5% HREEs, with additional samples 0.19–0.32% TREO, (all in float); early-stage confirmation of mineral potential.

# Picos Rare Earth Project

## Piaui Site



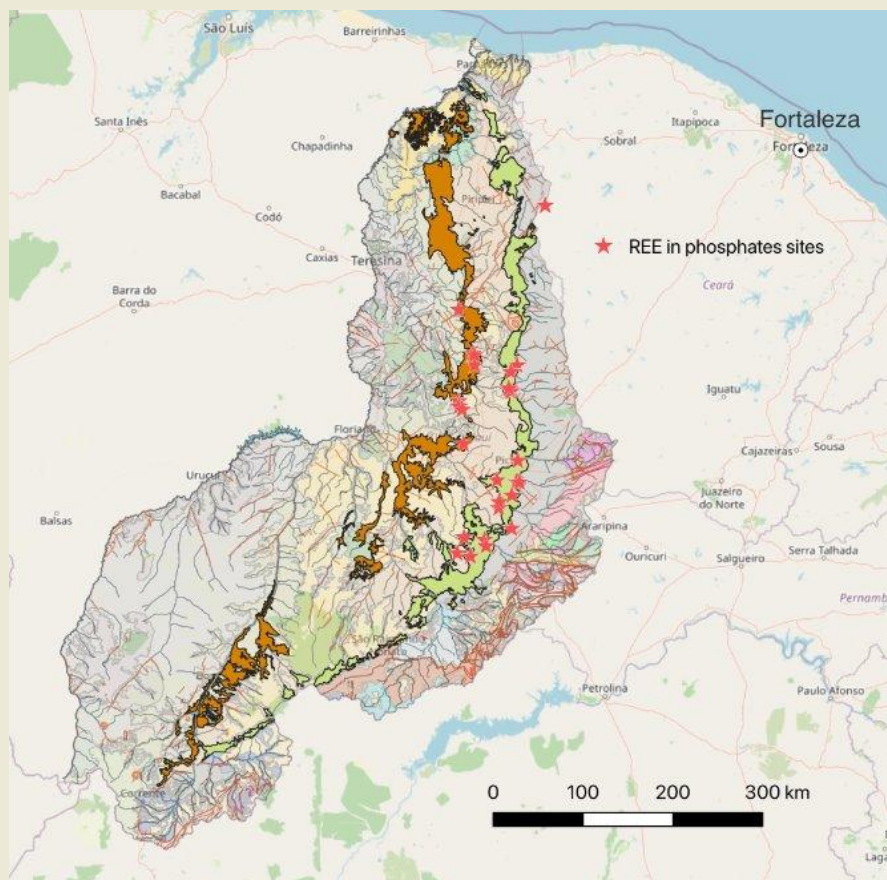
**Phosphate Rich Beds Investigated During Field Program**

## Due Diligence Field Program Completed Late 2025

- Confirmed phosphate beds with elevated REEs
- Confirmed distinctive phosphate nodules as mapping
- indication of prospective beds
- Applied gamma spectrometer and XRF methods to
- identify prospective sites
- Identified exploration strategies

# Picos Rare Earth Project

## The Significant Relationship Between Phosphates and REEs



**REE Showings in Phosphates in Piauí as Mapped by SGB (Brazil Geological Survey)**

- Phosphates deposited during the Devonian Period are uniquely anomalous in REEs
- Initial results from Picos show a much higher proportion of HREE than Mountain Pass, the only REE producer in the United States.
- HREEs are essential for their importance in clean energy and national security technologies.
- Devonian Phosphates like those present on the Picos REE project are also a potential source rock for Ionic Adsorption Clay Deposits
- Emerging important REE source due to potentially simpler extraction, lower cost and higher HREE percentage.

# Picos Rare Earth Project

## Next Steps



- Geological evaluation underway on two distinct models:
  - Phosphate-hosted HREE-enriched targets
  - Ion Adsorption Clay Deposit (IACD) potential — also a globally important source of heavy REE.
- Origen has filed LOI to acquire additional ground acquisitions in the region.
- Property wide shallow soil sampling completed on additional prospective area by the Vendor identified an anomalous REE area approximately 4 km x 6 km and centered on a high value of 282 ppm TREO+Y.

# OTHER PROJECTS

## Available for Option

### Golden Triangle

**Wishbone** Drill permitted, 3,941 ha project adjacent to Galore Creek. 9km trend along series of gold and silver rich targets. Samples of 8.5 ppm gold in soil and <sup>1</sup>grab samples of up 202.6 ppm in rock.

### Southern BC

**Broken Handle:** 2,098 ha historical mine - high-grade precious and base metals located 50 km north of Grand Forks.

**Bonanza Mountain:** 100% interest in 1,604 ha historically mined high-grade precious and base metal project located 20 km north of Grand Forks.

### Argentina Lithium

**Los Sapitos, Argentina** The 27,000 ha project is a new brine and clay lithium exploration target within a prospective tectonic corridor in northern San Juan province.



<sup>1</sup>Grab samples are by definition selective. Grab samples are solely designed to show the presence or absence of mineralization, and are not intended to provide nor should be construed as a representative indication of grade or mineralization at the Project.

<sup>2</sup> Referenced nearby historic resources, deposits and mines provide geologic context for the Project, but are not necessarily indicative that the Project hosts similar potential, size or grades of mineralization.

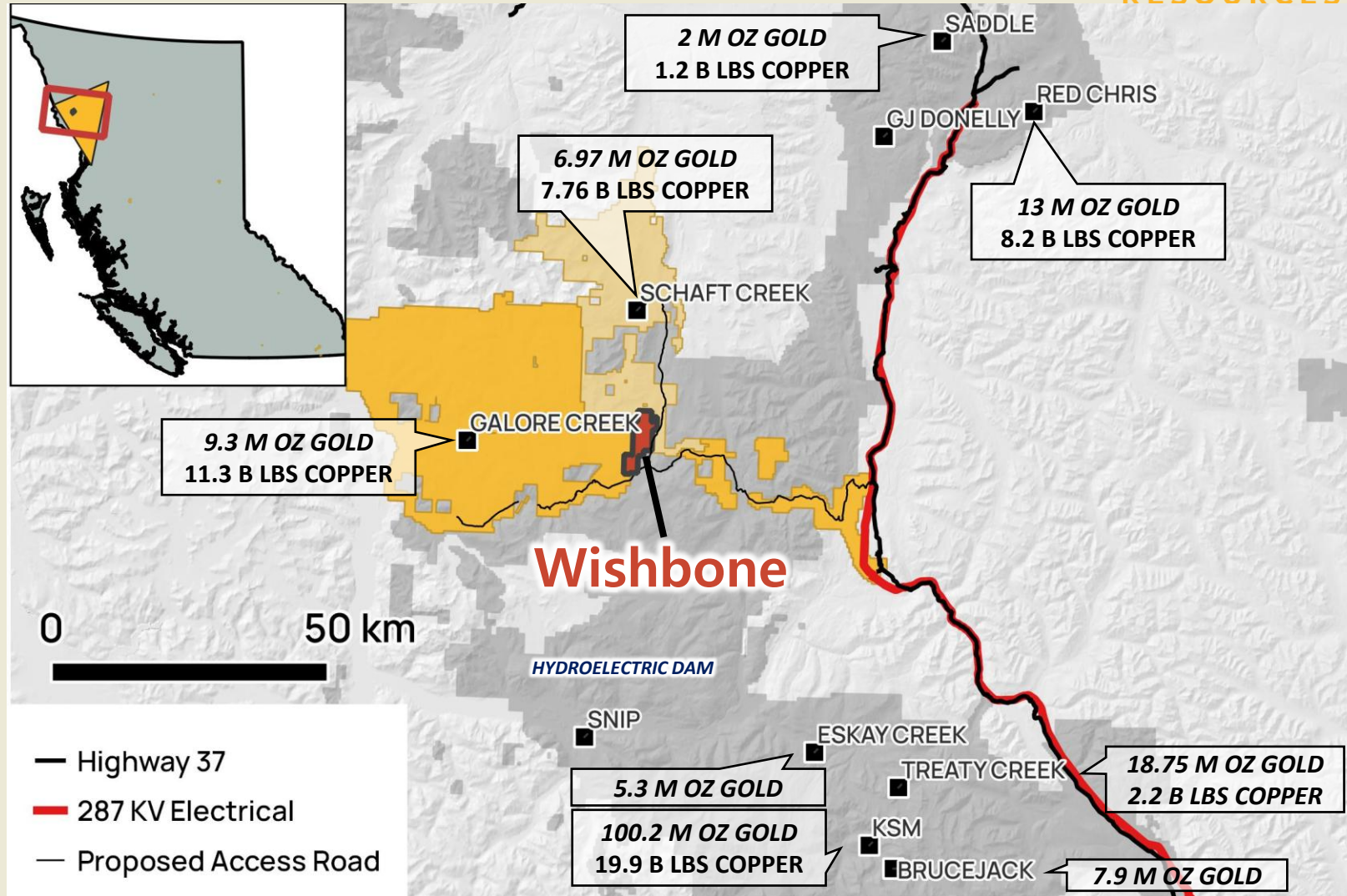
# GOLDEN TRIANGLE WISHBONE

British Columbia Targets Redefined

## Major Resources (Measured and Indicated) Within 75km of the LGM and Wishbone Claims

Deposit	Copper (Blb)	Gold (Moz)	Ag (Moz)
KSM	19.9	100.2	426.9
TREATY CREEK	2.18	18.75	112.4
RED CHRIS	8.2	13	
GALORE CREEK	11.3	9.259	149.8
SCHAFT CREEK	7.76	6.97	54.26
BRUCE JACK		7.9	21
ESKAY CREEK		3.9	101
SADDLE	1.8	3.47	7.6
<b>TOTAL</b>	<b>51</b>	<b>163</b>	<b>873</b>

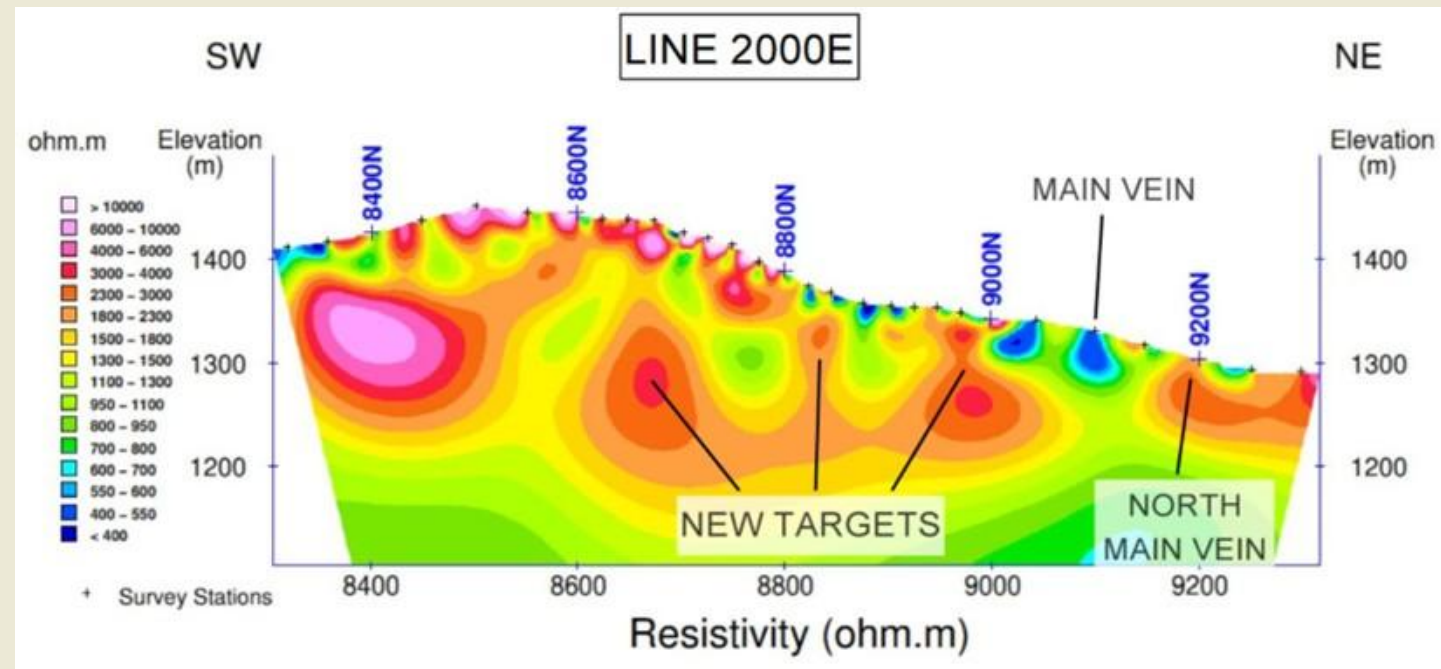
References: KSM : Seabridge (M+I) – 2022. TREATY CREEK -Tudor Gold (M+I) Website. RED CHRIS Imperial Metals (M+I) 2021. GALORE CREEK: Galore Creek (M+I) -2014. SCHAFT CREEK - Copper Fox – Reserves Website. ESKAY CREEK: Skeena Resources (M+I) -2021 -website. SADDLE: GT Gold (Indicated) - 2020. BRUCE JACK: Newcrest Annual Mineral Resources statement, 2023



# WISHBONE PROJECT

British Columbia Targets Redefined

- Drill permitted 3,971 ha. Property adjacent to Galore Creek, jointly owned by Teck and Newmont
- 11 target areas over a 9 km trend.
- Numerous soil samples greater than 1000 ppb (or 1 g/t) gold.
- Historical grab samples as high as 6.7 kg/t silver and 202 g/t gold
- Airborne geophysics highlighted underlying structures on the property.
- Rapidly receding glacial ice has exposed new high grade gold showings.
- Both the proposed Galore and Schaft Creek access roads cross the property.
- IP has outlined multiple high priority drill targets



**2025 IP Survey Results Outlining High Priority Targets**

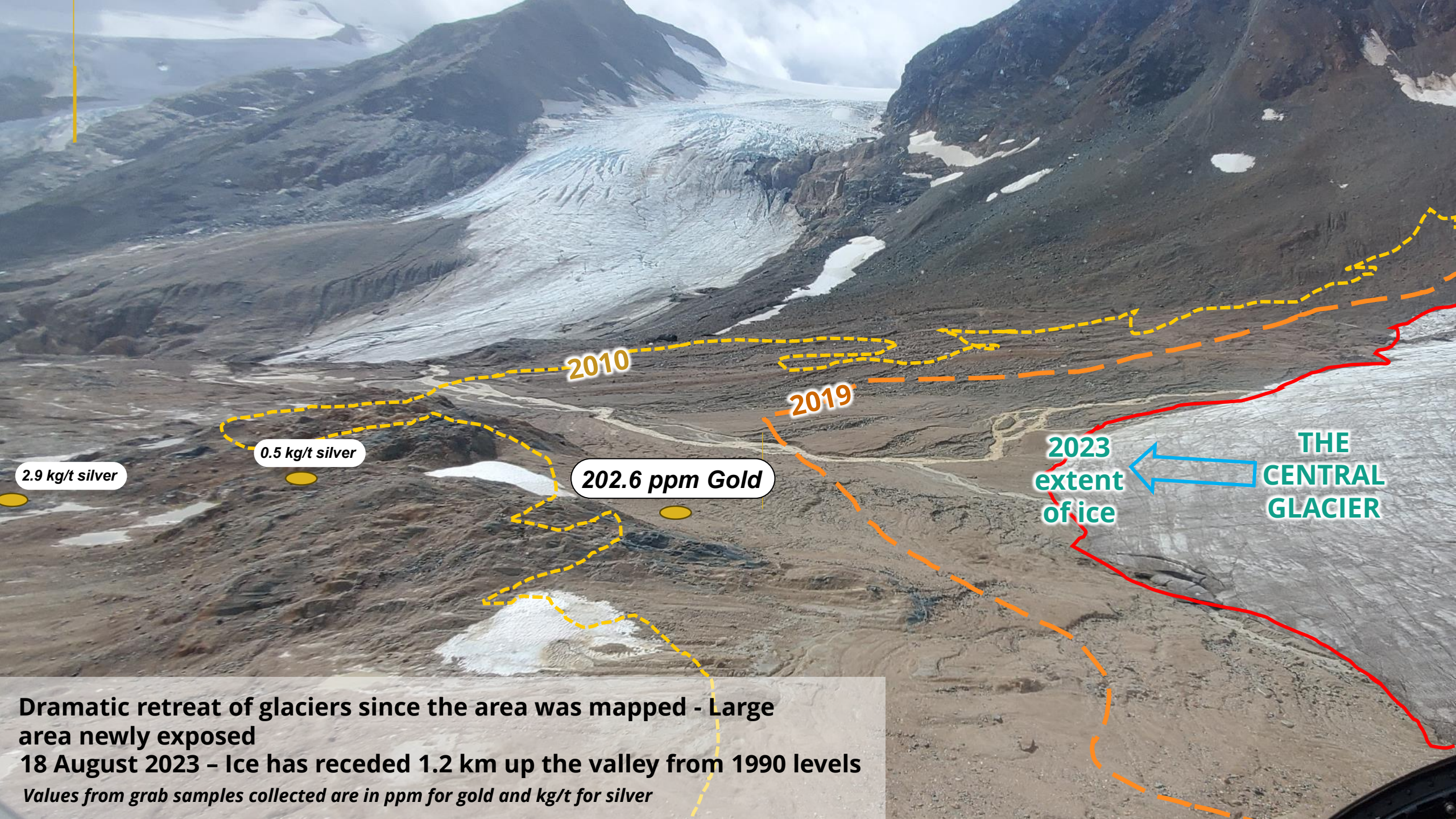
# WISHBONE PROJECT

British Columbia Targets Redefined



ORIGEN  
RESOURCES





2.9 kg/t silver

0.5 kg/t silver

202.6 ppm Gold

2010

2019

2023  
extent  
of ice

THE  
CENTRAL  
GLACIER

**Dramatic retreat of glaciers since the area was mapped - Large area newly exposed**  
**18 August 2023 - Ice has receded 1.2 km up the valley from 1990 levels**  
*Values from grab samples collected are in ppm for gold and kg/t for silver*

# LOS SAPITOS PROJECT

San Juan Argentina – Lithium Brine



Origen previously recognized that the geology of the mining-friendly northern San Juan Province was similar to that of within the established lithium belts in the north of the country.

Guided by this exploration model Origen was able to acquire a district-sized contiguous land package around a mostly-buried Los Sapitos salar in San Juan.

Since the acquisition Tres Quebradas was sold for \$920M CAD far south of the current Lithium Triangle.

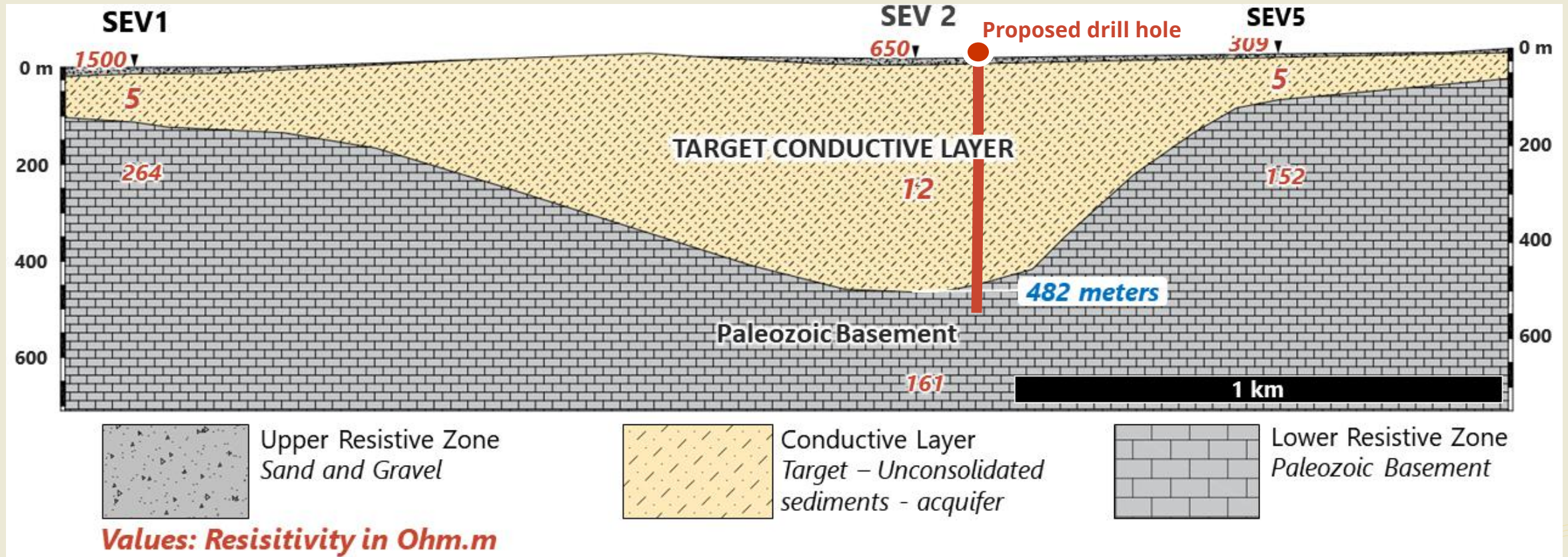


# LOS SAPITOS PROJECT

San Juan Argentina – Lithium Brine

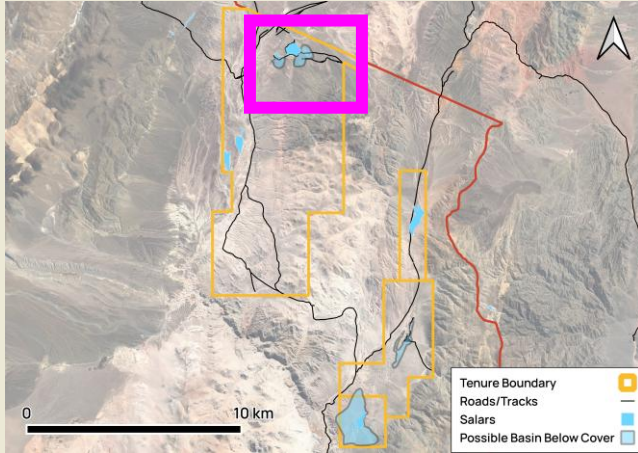
Result of 2023 geophysics showing the morphology of the basin  
 In July 2023 field teams carried out 3 vertical electrical sounding surveys at three locations in the area.

## Los Sapitos Salar



# LOS SAPITOS PROJECT

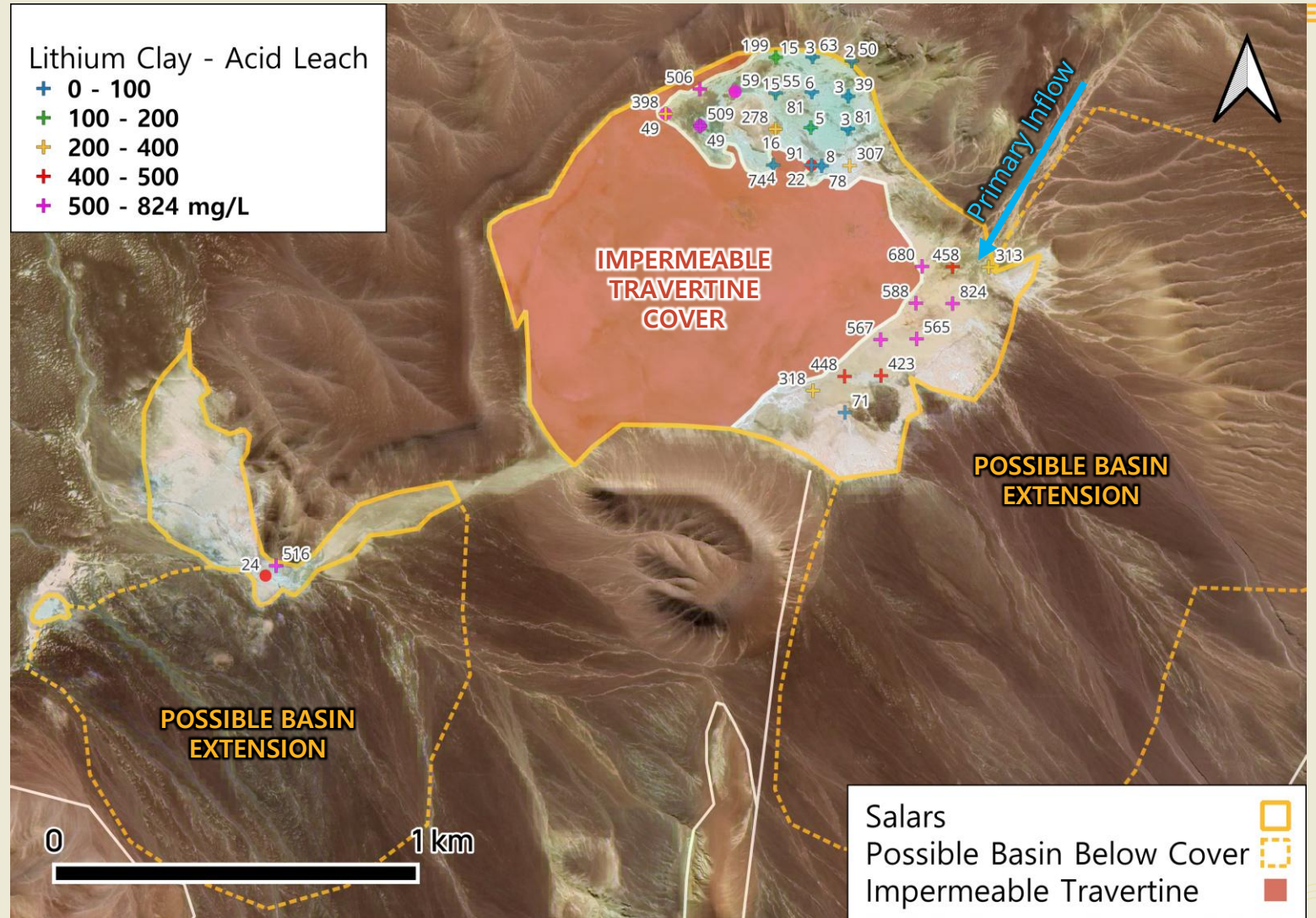
San Juan Argentina – Lithium Brine



2023 silt and brine samples collected from the Los Sapitos salar

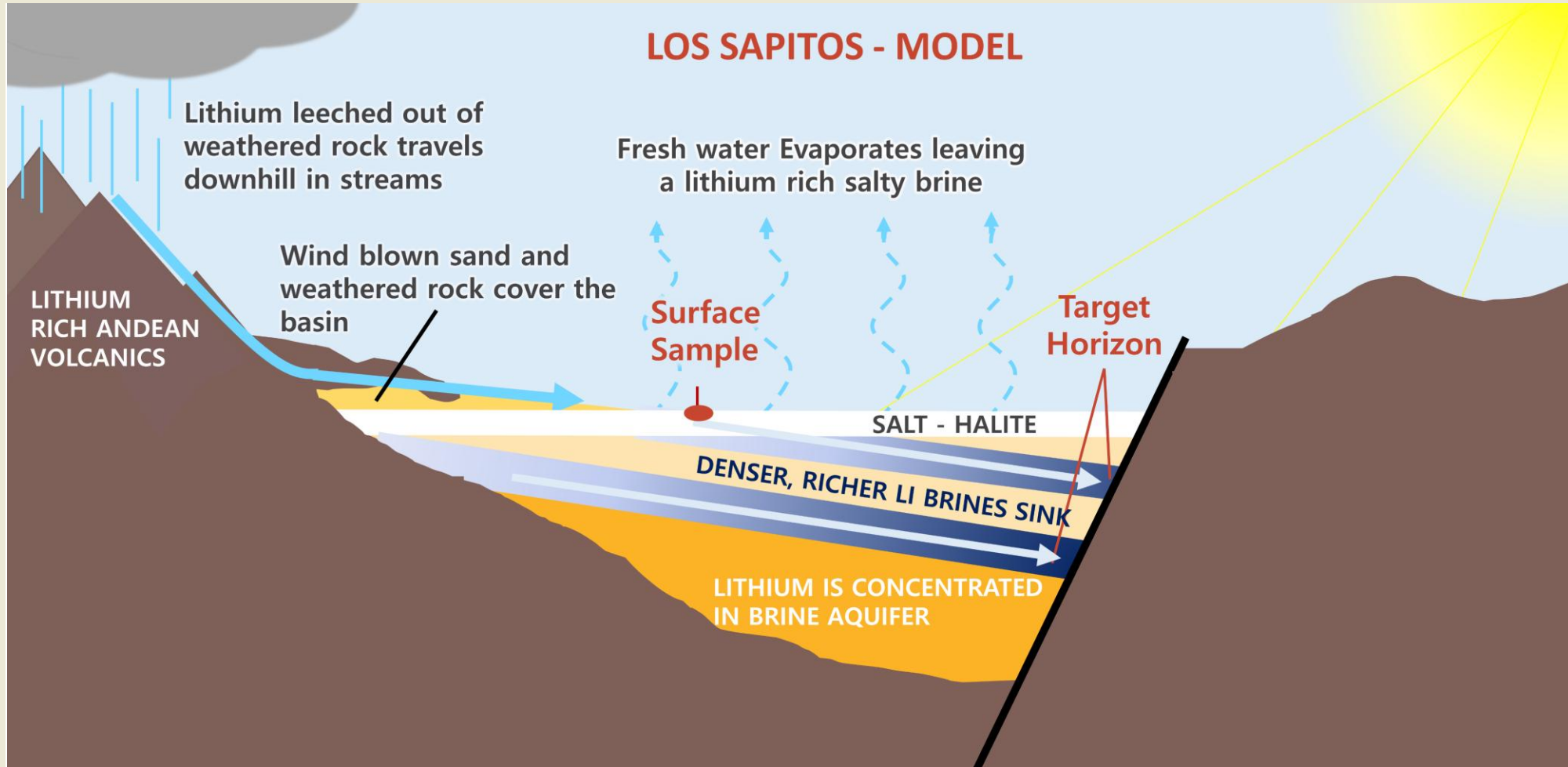
The results show that significant lithium is found both in clays and in evaporite mineralization along the eastern edge of the salar and in brine samples on the north-western part of the salar.

These areas will be targeted in upcoming drilling as well to test through the impermeable travertine



# LOS SAPITOS PROJECT

San Juan Argentina – Lithium Brine



# CONTACT

Gary Schellenberg – CEO, Director



604-681-0221



[gary@origenresources.com](mailto:gary@origenresources.com)

Caroline Klukowski – Investor Relations



604-763-8730



[ck@origenresources.com](mailto:ck@origenresources.com)



[www.origenresources.com](http://www.origenresources.com)

CSE: ORGN

FSE: 4VXA



**ORIGEN**  
**RESOURCES**